



Nelson & Nelson Mfg.
5210 Stadium Blvd. Suite A
Jonesboro AR 72401
870-268-6393 : Cell 219-1019

Installation Instructions 7-25-23

Model SRT2020+LQBR

Spyder 2020+ RT BRP LinQ Rack Adjustable Passenger Backrest Kit

Steps needed to install your Adjustable Passenger Backrest.

DO NOT USE IMPACT DRILL ON BOLTS OR NUTS.

(Stainless Steel Hardware is Softer Metal and can strip the threads.)

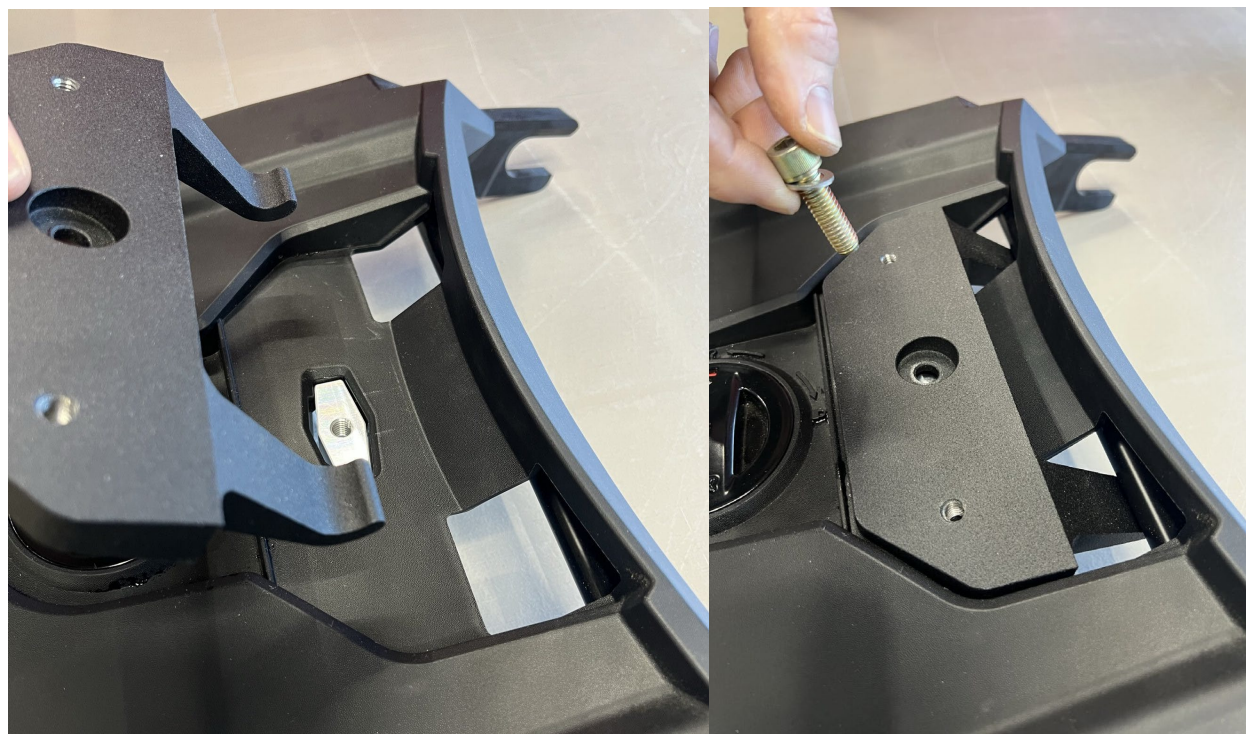
You must use lubricant on bolts and nuts to prevent galling. Minimum WD40, preferably Anti-Seize Stainless Steel Lubricant MRO 1000



1.- You must have the BRP LinQ mounting rack for the 2020+ RT base models. Next take the Aluminum lower lock plate as shown below and locate it underneath the slot as shown.



2.- Next take the base mount plate and secure it to the LinQ mount. The plate secures to the LinQ with the two hooks that loop under the bar in the LinQ mount. Once in place take the Socket head bolt and washer and secure the base plate to the LinQ mount. Tighten down the bolt.



3.- Then take the back rest frame and bolt it down to the base mount using the two black socket head bolts and washers. Tighten them down. Then insert the plastic cap as shown below.



4.- Once the backrest frame mount is in place take the back rest and secure it to the frame mount with the 3 Phillips Screws and plastic cap covers. Adjust the backrest height to the best position that fits the rider. Using the Loctite supplied remove each screw one at a time, put a few drops on each screw then tighten all up evenly. This will make sure the vibration does not loosen the screens as you ride. Once all screws are in place, you can adjust the height of the back rest once installed on your Spyder RT



The backrest is now installed. Now you can take the whole unit and snap it into the rear to the Spyder. Be sure to lock the Linq mount in place.

We thank you for purchasing one of our 2020+ RT Products. Today we know the need for accessories that compliment your Spyder, and we have met that demand with a stylish system that compliments the design of your Spyder@!

Spyderextras.com