



Nelson & Nelson Mfg.
5210 Stadium Blvd, Suite C
Jonesboro AR 72404
870-268-6393 : Cell 219-1019

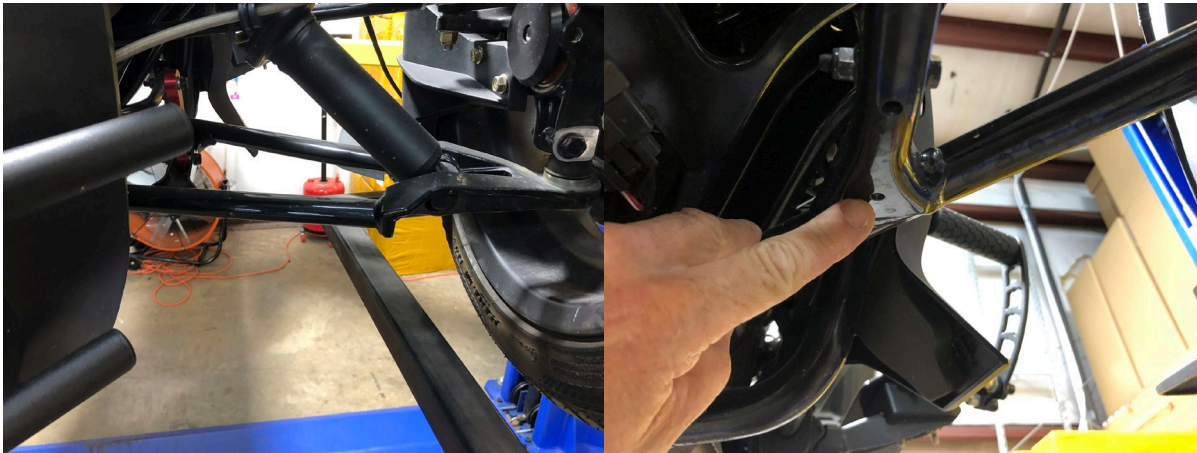
Installation Instructions 9-18-23

Model RYK-ASHLD

Ryker Front A-Arm Shield with LED SE Performance Lights

Steps needed to install your Ryker A-Arm Shields

- 1.- Locate each arm and verify the 3 lower hole locations on the arms lower side to mount the Shields.
One at front & two at rear of arm.



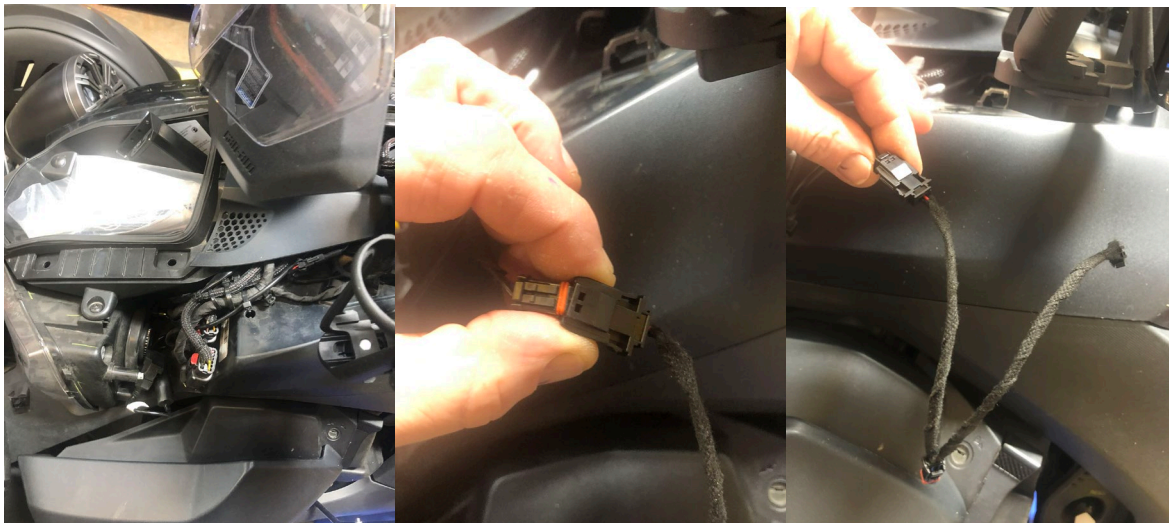
- 2.- Locate the correct shield per side and place under the A-Arm. Then take the 6mm screw and 4mm Allen Wrench and secure the shield to the arm as shown below. Do not tighten the screw at this point. Just enough to secure the shield. Then take the two 5mm screw & the 3 mm Allen Wrench and secure the rear of the shield to the arm placing the screws through the shield and then add the washer and locknut per screw. Now tighten down all screws.



2.- Next remove on the left side only the Ryker the upper cover panel by removing the pushing pins as shown below in these locations. Once all push pins are removed, remove that panel to access the factory accessory plug.



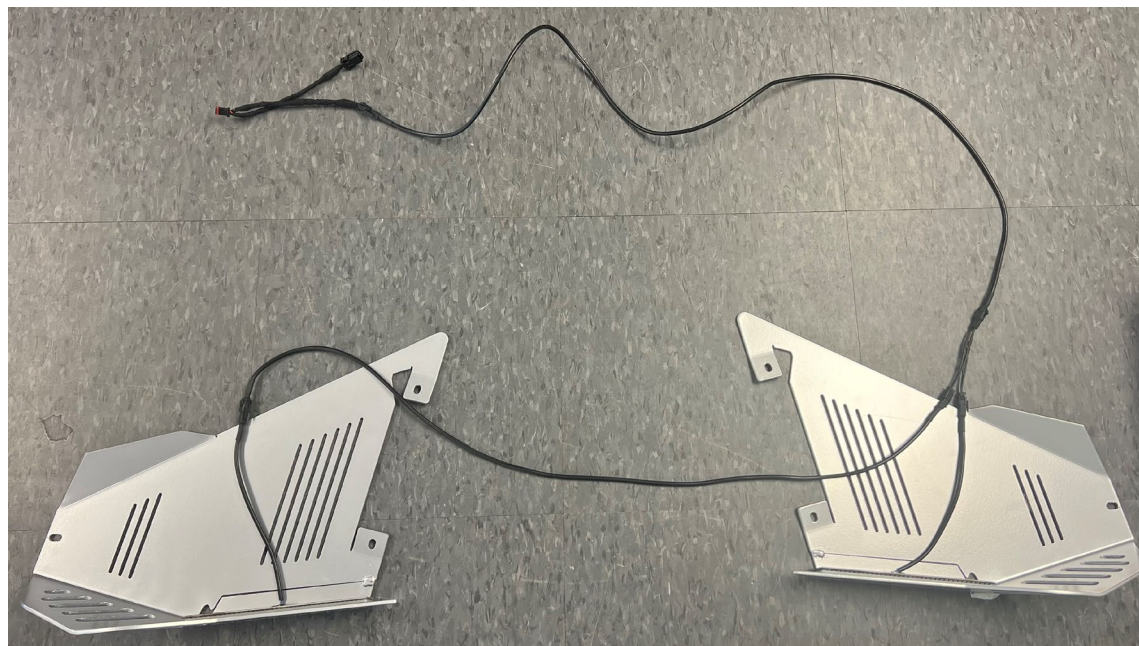
4.- Take the factory accessory plug and connect it to the supplied Y-Adapter supplied to allow connection of the LED Lights in the A-Arm shields.



5.- Once the Y-Adapter is plugged in to the accessory plug, you are now ready to run the wires from the LED Light strips on each shield to this accessory plug. This setup is all Plug & Play. As shown below, take the LED cross cable connector cable from the right-side shield and run it to the left side area and plug it into the supplied main harness Y-Adapter. Then run the main wiring harness cable up to the accessory wire adapter you previously installed. Plug it in.

At this point turn on the Ryker and verify the LED Lights light up. If so, all is correct. Next take the supplied wire ties and make sure the cross cable and all main harness cables are tied to the frame to secure them. Always follow existing wiring harnesses and avoid joints that may pull the wires. Be sure to avoid the steering shaft as a tie point. Frame and existing wiring harnesses only.

You're A-Arm Shields are now installed!



We thank you for purchasing one of our Ryker Accessories. Today we know the need for Innovative accessories, and we have solved that demand with a stylish system that compliments the design of your Ryker®!

spyderextras.com

